



# Once and Done, High-Performance, PERMANENT Repair



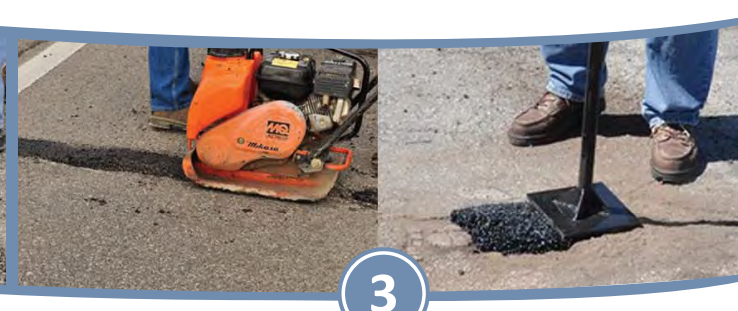
1

Using a broom or leaf blower, clean out large chunks and loose debris from the hole. UPM® mix works best if the material is applied to a solid surrounding pavement and good base.



2

Apply UPM® mix, keeping material contained in the hole. If the hole is deeper than 3" install and compact in 2" lifts. Material should be 25% higher than surface before compaction.



3

Compact with hand tamper, truck or car tire, plate compactor or roller.

## Additional step if needed

To reduce tackiness for immediate pedestrian traffic, after compaction, dust surface with sand or cement powder to help "set" UPM® mix quicker.

UPM® is a registered trademark of UNIQUE Paving Materials Corp.



Corporate Office | 800.441.4880 | 3993 E. 93rd Street, Cleveland, OH 44105 | [uniquepavingmaterials.com](http://uniquepavingmaterials.com)



# QUESTIONS & ANSWERS



**Why Is UPM® mix better than others?** UPM mix is state approved and used by state DOTs all across the U.S. All raw materials are tested by our state-of-the-art laboratory to ensure quality and guaranteed performance.

**Are there seasonal grades of UPM mix?** Yes, UPM mix is available in winter, spring/fall and summer formulas. These are designed for the optimum performance during the various temperatures of application.

**What is the coverage rate of UPM mix?** Approximately 10 lbs. of UPM mix will cover a square foot 1" deep.

**Is a primer or tack coat needed before applying UPM mix?** No! UPM mix is self-priming. The proprietary liquid asphalt gives UPM mix its tenacious binding properties.

**Can UPM mix be used in wet holes?** Wet or dry, UPM mix is designed to perform in any weather, any temperature.

**Can UPM mix be used for concrete repair?** Yes, UPM mix is ideal for concrete pavements including roadways, driveways, bridge decks and parking lots.

**What is the shelf life of packaged UPM mix?** One year.

---

***Distributed by:***

UPM® is a registered trademark of UNIQUE Paving Materials Corp.



Corporate Office | 800.441.4880 | 3993 E. 93rd Street, Cleveland, OH 44105 | [uniquepavingmaterials.com](http://uniquepavingmaterials.com)